

## BALL ABANDONMENT VALVE

The **Ball Abandonment Valve** provides a means for temporarily abandoning a well without tripping out a workstring. The valve is run in conjunction with a heavy duty service packer. The Ball Abandonment Valve and Packer are designed to allow heavy loads to hang through them and thus allowing a workstring to hang below during abandonment. The most common use of the Ball Abandonment Valve and Packer combination is offshore for storm abandonment, but can also be used for working on BOP's during drilling without tripping the drill string out.

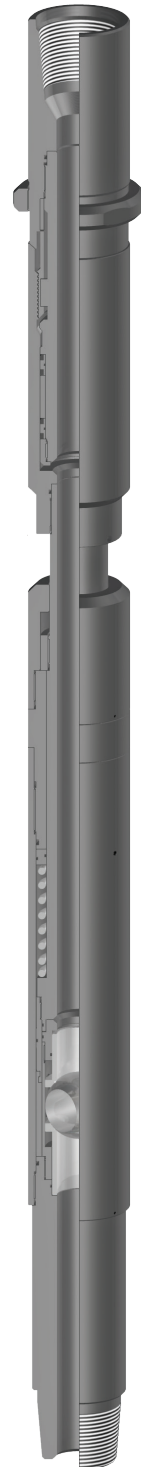
The Ball Abandonment Valve uses a ball valve that is opened and closed by raising and lowering the workstring. The ball valve is designed to allow full movement

through the workstring and allows for higher rates of circulation without damaging the valve.

The Ball Abandonment Valve uses a colleted latch that has a left-hand buttress thread that allows easy insertion of the latch while providing a strong connection. The colleted latch is supported during loading to ensure the latch threads stay completely engaged. All external threads are locked with set screws to ensure against backing off during packer setting.

### Special Features

- Full opening through ball valve
- Right-hand release, straight set down to re-attach



### Product Specifications

Size (inches)	Tool OD (inches)	Tool ID (inches)	Thread Connections Box Up / Pin Down	Part Number
6-1/4	6.500*	2.70	4-1/2 IF TOOL JOINT	62262

\* OD of centralizer ring is larger than the basic tool OD.

**NOTE:** All pricing includes standard Nitrile trim. Other sizes and connections available upon request.

### Centralizer Sizes

Casing Size (inches)	Centralizer OD (inches)
9-5/8	8.13
10-3/4	9.25
11-3/4	10.25
13-3/8	11.63

Service Tools