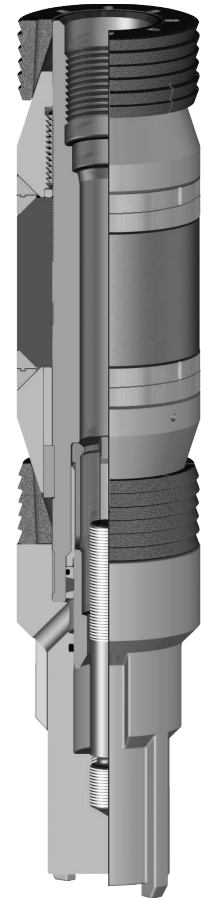


CEMENT RETAINER

The **Cement Retainer** is a drillable packer that provides the end user with a tool that will consistently contain well pressures at elevated temperatures and pressures. This tool is designed to be used for remedial cementing operations and light service applications. This tool permits faster removal from the well with either rotary or cable tool methods due to its compact size and the selection of high quality construction materials.

Special Features

- Surface controlled valve
- Allows pressure testing before squeeze
- Valve automatically closes when the stinger is removed, locking in the squeeze pressure
- Valve protects sensitive zones in low fluid wells
- Simple conversion to bridge plug
- Mechanical or wireline set available
- Components rotationally locked for easy drillout



Wireline Set
Cement Retainer



Mechanical
Slip Kit

Product Specifications

Casing		Recommended Hole Size (inches)	Tool OD (inches)	Part Number	
Size (inches)	Weight (lbs/ft)			Mechanical Set	Wireline Set
4-1/2	9.5 - 15.1	3.826 - 4.090	3.612	84045MS	84045WS
5	11.5 - 18.0	4.276 - 4.560	3.937	84050MS	84050WS
5-1/2	14.0 - 23.0	4.670 - 5.012	4.315	84055MS	84055WS
6-5/8	17.0 - 32.0	5.675 - 6.135	5.375	84065MS	84065WS
7	17.0 - 35.0	6.004 - 6.538	5.680	84070MS	84070WS
7-5/8	20.0 - 39.0	6.625 - 7.125	6.313	84075MS	84075WS
8-5/8	24.0 - 52.0	7.435 - 8.097	7.125	84085MS	84085WS
9-5/8	29.3 - 58.4	8.435 - 9.063	8.125	84095MS	84095WS
10-3/4	32.75 - 60.7	9.660 - 10.192	9.437	84010MS	84010WS
11-3/4	38.0 - 60.0	10.772 - 11.150	10.437	84011MS	84011WS
13-3/8	48.0 - 72.0	12.347 - 12.715	12.000	84013MS	84013WS

OPTIONS: MS (Mechanical Set), WS (Wireline Set)

NOTE: Conversion Kits are available for converting either way.

NOTE²: All pricing includes standard Nitrile trim. Other sizes and connections available upon request.

Service Tools