

CIW BRIDGE PLUG

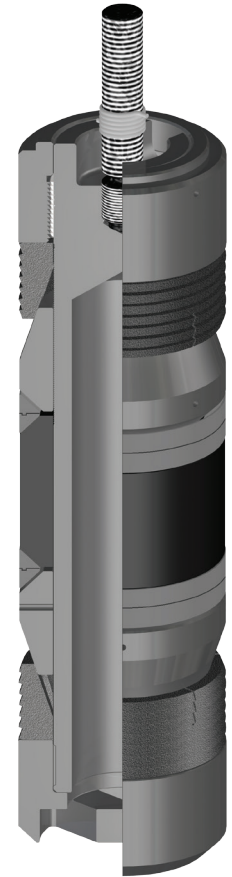
The **CIW Bridge Plug** is designed to have excellent running characteristics and secure sets. This plug can be set on different types of Wireline Pressure Setting Tools as well as with Hydraulic Setting Tools. This plug is designed for rapid drill-out while maintaining sufficient strength during the set. It is designed for high differential pressures and temperatures up to 250°F with standard Nitrile element and O-ring. Different elastomers are available for higher temperatures.

The short, compact, interlocked construction assures the CIW Bridge Plug will provide faster, safer run-in, dependable set and pack-off, and hold

pressure that is safe for the casing weight and grade. The interlock construction and compact size requires minimal material removal during drill out.

Special Features

- Electric, wireline or hydraulic set
- Drillable, cast iron construction
- One piece break-apart slips
- Rubber extrusion resisting backups on elements
- Sets with common setting sleeves
- Locking mechanism for ease in drilling multiple plugs



Product Specifications

Casing		Recommended Hole Size (inches)	Tool OD (inches)	Part Number
Size (inches)	Weight (lbs/ft)			
3-1/2	7.7 - 10.2	2.922 - 3.068	2.750	85035
4-1/2	9.5 - 15.1	3.826 - 4.090	3.613	85045
5-1/2	13.0 - 23.0	4.670 - 5.044	4.315	85055
7	17.0 - 35.0	6.004 - 6.538	5.680	85070
7-5/8	20.0 - 39.0	6.625 - 7.125	6.312	85075
8-5/8	24.0 - 52.0	7.435 - 8.097	7.125	85085
9-5/8	29.3 - 61.1	8.375 - 9.063	8.125	85095
10-3/4	32.75 - 60.7	9.660 - 10.192	9.437	85010
11-3/4	38.0 - 60.0	10.772 - 11.150	10.437	85011
13-3/8	48.0 - 72.0	12.347 - 12.715	12.000	85013
16	65.0 - 128.0	14.438 - 15.250	14.125	85016

NOTE: All pricing includes standard Nitrile trim. Other sizes and connections available upon request.

Service Tools