

## HD ABANDONMENT PACKER

The **HD Abandonment Packer** is a heavy duty service packer ideally suited for all types of squeeze cementing, formation fracturing, high pressure acidizing, etc. This packer is a large opening compression set packer with hydraulic button-type hold down. This packer withstands high pressure from above or below and uses a 3-element packing system, J-slot, and a drag block mechanism for easy setting. This packer

has a built-in unloader which circulates across the hold down buttons to improve retrievability and run in performance

### Special Features

- Heavy duty mandrels for high load capacity
- Extra lower slips to distribute hanging load

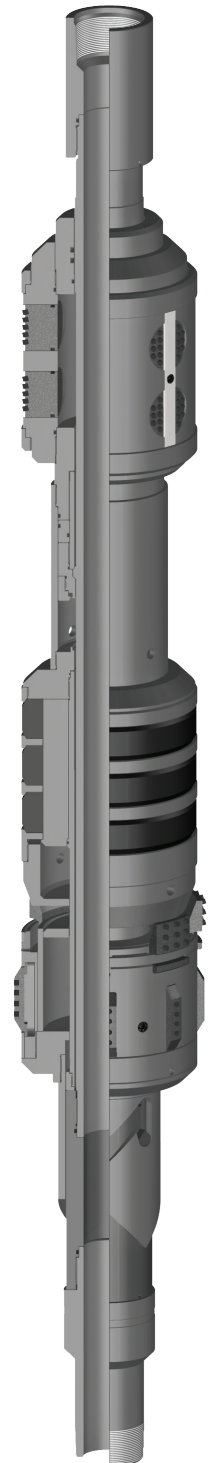
### Product Specifications

Casing		Recommended Hole Size (inches)	Gage OD (inches)	Max OD (inches)	Tool ID (inches)	Thread Connections Box Up / Pin Down	Part Number
Size (inches)	Weight (lbs/ft)						
6-5/8	24.0 - 32.0	5.675 - 5.921	5.500	-	2.50	3-1/2 IF TOOL JOINT	61565-XBEC
7	17.0 - 26.0	6.276 - 6.538	6.000	6.062 <sup>1</sup>	2.50	3-1/2 IF TOOL JOINT	61572-XBEC
	26.0 - 32.0	6.094 - 6.276	5.875	-	2.50	3-1/2 IF TOOL JOINT	61570-XBEC
7-5/8	33.7 - 39.0	6.625 - 6.765	6.453	6.500 <sup>1</sup>	2.50	3-1/2 IF TOOL JOINT	61576RS-XBEC
9-5/8	32.3 - 43.5	8.755 - 9.001	8.500	-	3.50	4-1/2 EUE	61596HD
						4-1/2 IF TOOL JOINT	61596-XBEE
	43.5 - 53.5	8.535 - 8.755	8.250	-	3.50	4-1/2 EUE	61595HD
						4-1/2 IF TOOL JOINT	61595-XBEE
10-3/4	32.75 - 45.5	9.950 - 10.192	9.700	-	3.50	4-1/2 IF TOOL JOINT	61501-XBEE
	51.0 - 65.7	9.560 - 9.850	9.312	9.374 <sup>1</sup>	3.50	4-1/2 IF TOOL JOINT	61510-XBEE
	65.7 - 91.2	9.032 - 9.560	8.813	-	3.50	4-1/2 IF TOOL JOINT	61599-XBEE
11-3/4	42.0 - 65.0	10.682 - 11.084	10.438	10.500 <sup>1</sup>	3.50	4-1/2 IF TOOL JOINT	61511-XBEE
13-3/8	54.5 - 77.0	12.275 - 12.615	12.000	-	3.50	4-1/2 EUE	61513HD
						4-1/2 EUE	61513HD-YBAG
						4-1/2 IF TOOL JOINT	61513LS-XBEE
						4-1/2 IF TOOL JOINT	61513-XBEE

<sup>1</sup> Maximum OD is across retracted drag blocks.

OPTIONS: LM (Left-Hand Manual), LS (Left-Hand Auto), RM (Right-Hand Manual), RS (Right-Hand Auto)

NOTE: All pricing includes standard Nitrile trim. Other sizes and connections available upon request.



Service Tools