

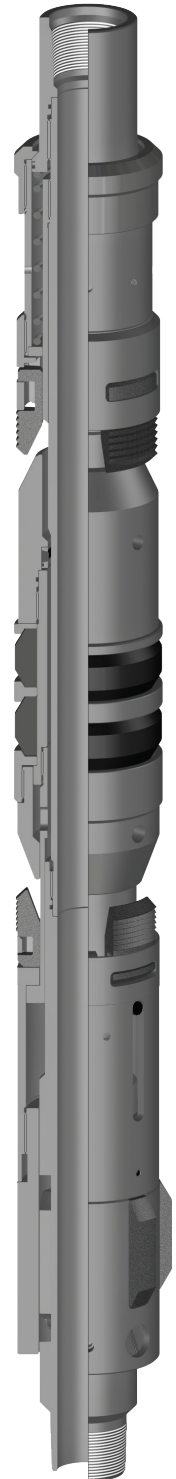
JETTSET PACKER

The **Jettset Packer** is a versatile mechanically set retrievable packer and may be used in any production application. This packer is suited for treating, testing, or injection applications, in pumping or flowing wells, either deep or shallow. This packer can be left in tension or compression, depending on well conditions and the required application. An internal by-pass reduces swabbing when running and retrieving. The by-pass closes when the packer is set and opens prior to releasing the upper slips when retrieving to allow pressure equalization. The J-Slot design allows easy setting and releasing; 1/4 turn right-hand set, 1/4 turn right-hand release.

This packer is rated to 7,000 PSI and can be configured with different elastomers and metallics to suit downhole conditions.

Special Features

- By-pass below upper slips to wash debris when valve is opened
- By-pass is opened before upper slips are released
- Can be set with tension for shallow well applications
- Can be left in tension, compression or neutral
- 1/4 turn right-hand set, 1/4 turn right-hand release standard
- Additional J-Slot arrangements available
- Short, compact design



Product Specifications

Casing		Recommended Hole Size (inches)	Gage OD (inches)	Max OD (inches)	Tool ID (inches)	Thread Connections Box Up / Pin Down	Part Number
Size (inches)	Weight (lbs/ft)						
4-1/2	9.5 - 13.5	3.920 - 4.090	3.750	-	1.94	2-3/8 EUE	12045
7	17.0 - 26.0	6.276 - 6.538	6.000	6.062 ¹	2.50	2-7/8 EUE	12072

¹ Maximum OD is across retracted drag blocks.

NOTE: All pricing includes standard Nitrile trim. Carbide, other sizes and connections are available upon request.