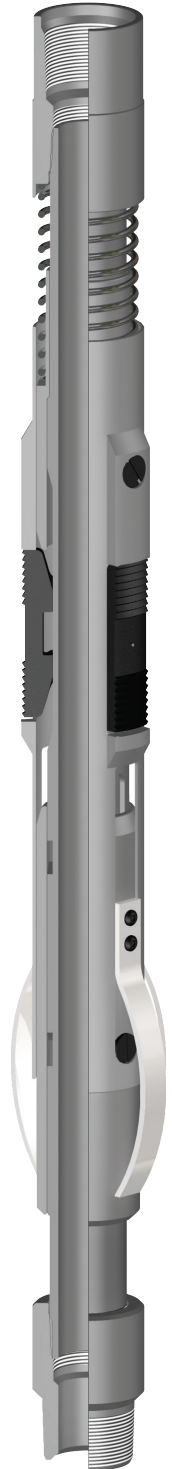


QUARTER TURN REDUCED OD TUBING ANCHOR

The **Quarter Turn Reduced OD Tubing Anchor** is a mechanically set, retrievable, tubing anchor designed to allow increased fluid bypass in the annulus. The anchor is suited for treating, testing, injecting, pumping wells, and flowing wells, deep or shallow. The slip design allows the anchor to be left in tension or compression, depending on well conditions and the required application. The J-slot design allows easy setting and releasing with 1/4 turn right-hand set, right-hand release.

Special Features

- 1/4 turn right-hand set, 1/4 turn right-hand release
- Safety shear release
- Large flow area around tool



Product Specifications

Casing		Recommended Hole Size (inches)	Tool OD (inches)	Tool ID (inches)	Thread Connections Box Up / Pin Down	Part Number
Size (inches)	Weight (lbs/ft)					
4-1/2	9.5 - 13.5	3.920 - 4.090	3.750	1.20	2-3/8 EUE	31545
5-1/2	13.0 - 23.0	4.670 - 5.044	4.500	2.00	2-7/8 EUE	31556
7	23.0 - 35.0	6.004 - 6.366	5.750	2.44	2-7/8 EUE	31570
				2.44	3-1/2 EUE	31573