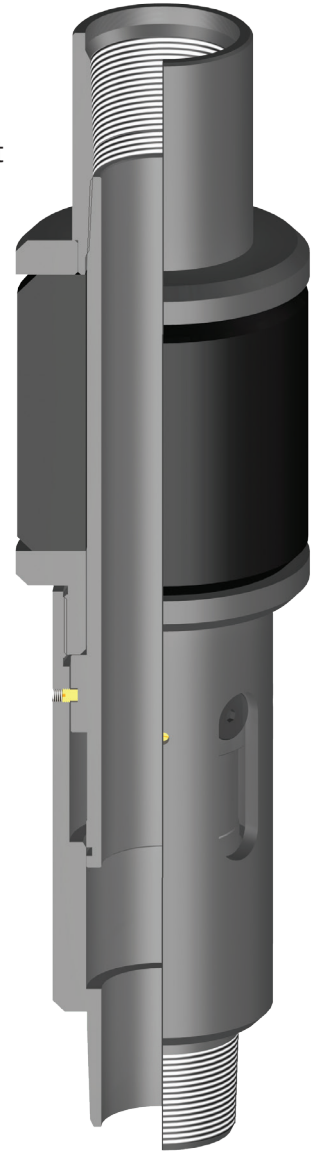


## SET DOWN ISOLATION PACKER

The **Set Down Isolation Packer** is an economical, compact compression set tool used to isolate casing or perforations. It can also be used in multi-zone injection applications. This packer runs above a compression set packer (such as the AS-II Packer or AS-III Packer). Applied compression will shear the shear screws and allow pack-off. Straight pick-up releases the packer.

### Special Features

- Economical design
- Adjustable delayed set
- No rotation needed to set or un-set



### Product Specifications

Casing		Recommended Hole Size (inches)	Tool OD (inches)	Tool ID (inches)	Thread Connections Box Up / Pin Down	Part Number
Size (inches)	Weight (lbs/ft)					
2-7/8	6.5	2.375	2.250	1.50	1.900 NUE / 1.900 EUE	64125
4-1/2	9.5 - 13.5	3.920 - 4.090	3.750	1.94	2-3/8 EUE	64145
5	11.5 - 20.8	4.156 - 4.560	4.000	1.94	2-3/8 EUE	64150
5-1/2	13.0 - 20.0	4.778 - 5.044	4.625	1.94	2-3/8 EUE	64155
				2.50	2-7/8 EUE	64156
				3.00	3-1/2 EUE	64158
7	17.0 - 26.0	6.276 - 6.538	6.000	2.50	2-7/8 EUE	64159
				2.00	2-3/8 EUE	64171
7	17.0 - 26.0	6.276 - 6.538	6.000	2.50	2-7/8 EUE	64170
				3.00	3-1/2 EUE	64174
				3.00	3-1/2 EUE	64173
7-5/8	33.7 - 39.0	6.625 - 6.765	5.938	2.82	2-7/8 EUE / 4-1/2 LTC	64175
8-5/8	32.0 - 40.0	7.725 - 7.921	7.500	3.00	3-1/2 EUE	64182
9-5/8	32.3 - 47.0	8.681 - 9.001	8.438	3.00	3-1/2 EUE	64196
	40.0 - 47.0	8.681 - 8.835	8.438	4.00	4-1/2 EUE	64195

**NOTE:** All pricing includes standard Nitrile trim. Other sizes and connections available upon request.